

Girls Place

A Place to Go ...

... A Place to GROW



2014 Annual Report

2101 NW 39th Avenue,
Gainesville, FL, 32605
352-373-4475
www.girlsplace.net

ABOUT US



VALUES

At Girls Place we believe that all girls should be encouraged, challenged, and supported to become independent, self-motivated individuals.

VISION

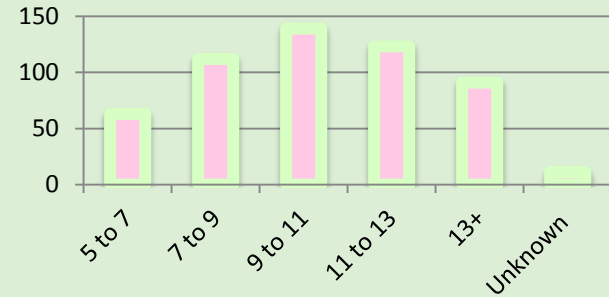
Girls Place girls become independent, supportive, kind, caring women who are leaders in their communities.

MISSION

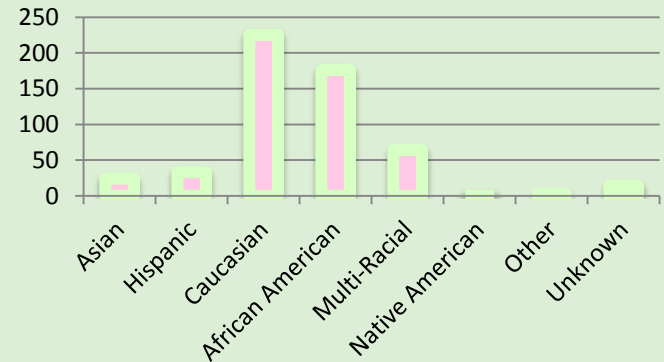
At Girls Place, we empower girls to grow courageous, strong, and self-sufficient. We inspire our girls to celebrate themselves—their minds, their hearts, and their physical well-being.

TOTAL PARTICIPANTS: 539

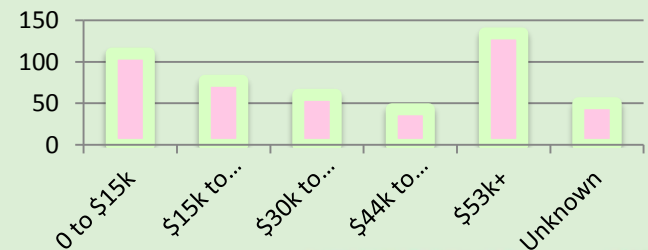
AGE BREAKDOWN



ETHNIC BREAKDOWN



HOUSEHOLD INCOMES



OPERATIONS BOARD OF DIRECTORS



OFFICERS

PRESIDENT: Gia Arvin, Matchmaker Realty

PRESIDENT-ELECT: Amy Howard, Venture Realty of North Florida, Inc.

VICE PRESIDENT, ATHLETICS: Cassie Macias, Retired Executive

VICE PRESIDENT, PUBLIC RELATIONS AND EVENTS: Sheila Jones,
Volunteer Executive, and Kristen Bash Farrell, Gainesville Sun

VICE PRESIDENT, PROGRAM DEVELOPMENT: Kacey Anderson, McGriff-
Williams Insurance

SECRETARY: Virginia Griffis, Scruggs & Carmichael, P.A.

TREASURER: Alan West, Comptroller, University of Florida



DIRECTORS

Mike Barton, Resort Connections, Inc.

Carmen Braun, Cox Communications

Erica Brown, Public Relations, Home Magazine Gainesville

Marynelle Hardee, Assistant Court Director and Legal Counsel

Claire Jacodson, Realtor

Natalie King, University of Florida Doctoral Candidate, College of
Education

Francisco Oquendo, Engineer for U.F. Facilities

Matt Pendleton, University of Florida Department of Housing &
Matt Pendleton Photography

Celia Slater, Former President of the Alliance of Women's Coaches,
NCAA

Kathy Viehe, Interim General Manager, GRU

Dr. Abby Wagner, Pediatric Pulmonary Physician, Department of
Pediatrics, UF



ADMINISTRATIVE STAFF



EXECUTIVE DIRECTOR: Janna Magette

PROGRAM DIRECTOR: Christi Arrington

ATHLETIC DIRECTOR: Tara Mercurio

DEVELOPMENT DIRECTOR: Laura Javidi

PROGRAM ASSISTANT: Patricia Simmons

ADMINISTRATIVE ASSISTANT: Kaitlyn Henderson

ASSISTANT DIRECTOR AND BOOKKEEPER: Courtenay Etheredge



OUR SERVICES

Girls Place has served over 20,000 girls since 1985. Girls ages 5-18 engage in recreational, athletic, tutorial, and mentoring programs in a safe and nurturing environment. For many girls, Girls Place is a home away from home, where they develop their potential and acquire a sense of responsibility to themselves and to the community.

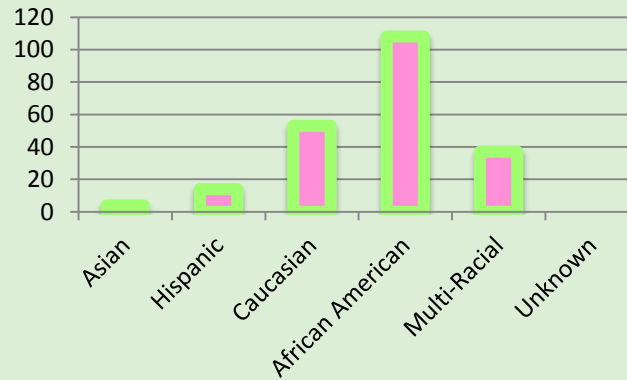


AFTER SCHOOL PROGRAM

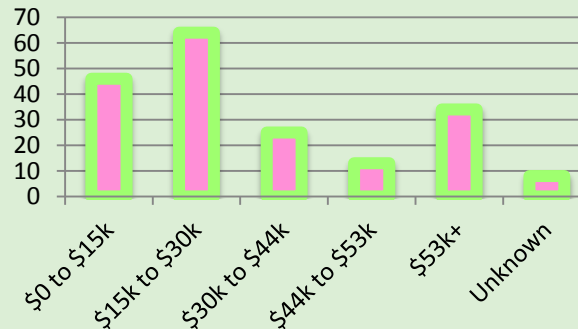
Our after school program provides transportation from many Alachua County schools to Girls Place for an afternoon of engaging, structured activities. Our vision is to create an environment where each girl who walks through our door has access to every possibility.

To support this vision, we offer arts and crafts, field trips, guest speakers, sports, and much more. In addition, a study period is built into our program and staffed each day with counselors and volunteers to provide homework assistance. For girls who are reading below grade level, our ACHIEVE program offers one-on-one reading time along with daily writing, vocabulary, and phonics support. At Girls Place, we are invested in all aspects of our girls' development.

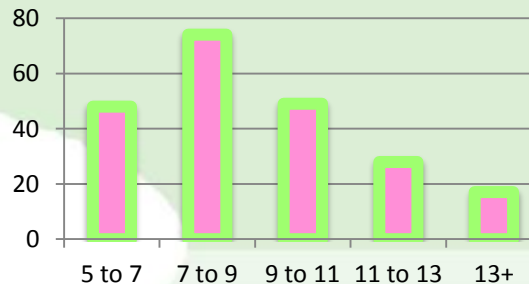
Ethnic Breakdown



Household Income



Age Groups



216 TOTAL PARTICIPANTS

49% of participants live in single parent households

51% of participants receive free/reduced lunch

8% of participants live with their grandparents

Total Volunteers

20 total volunteers

981 hours donated

Valued at \$21,199.41
(independentsector.org)



ATHLETICS



The Girls Place Athletic Program provides an opportunity for our girls to excel and for our community to come together. Through volleyball, basketball, track and field, and our sports camps, the girls learn the value of teamwork, good sportsmanship, and overcoming setbacks while developing as an athlete. Parents, coaches, and local female athletes support the girls' growth by attending their games and volunteering at events. Girls Place sees sports as an invaluable component of physical and emotional well-being.

315 TOTAL PARTICIPANTS

- **20%** of participants live in single parent household
- **18%** of participants receive free/reduced lunch
- **3%** of participants live with their grandparents

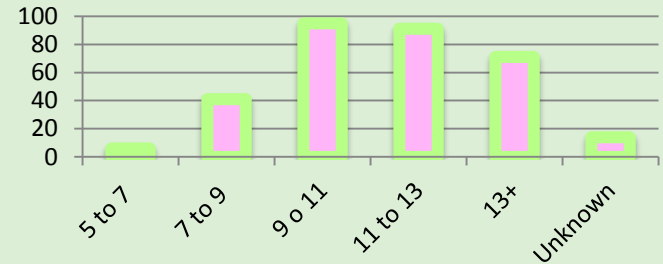
Number of Volunteers

130 total volunteers

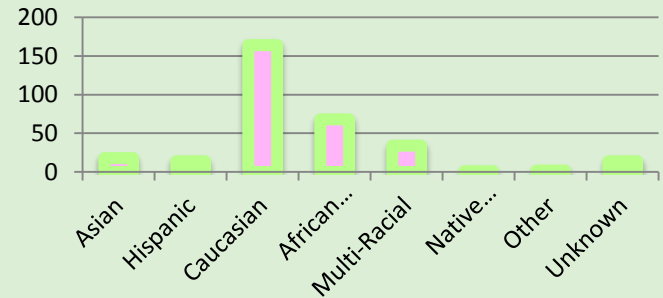
2,938 hours donated

Valued at \$63,490.18 (independentsector.org)

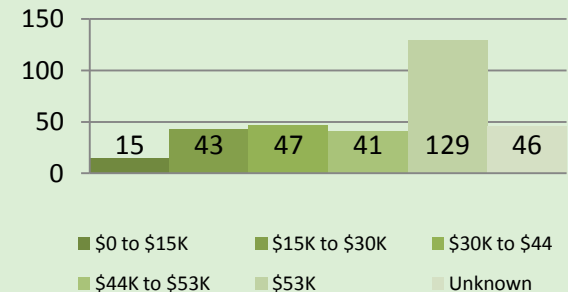
Age Groups



Ethnic Breakdown



Income



SUMMER DAY CAMP



Girls Place Summer Day Camp operates Monday-Friday from June to August. The purpose of the summer day camp is to involve the girls in well-rounded summer activities.

The program offers a number of activities based on the components of wellness: physical, emotional, spiritual, environmental, intellectual, and social. The girls did not have to commit to the entire summer; they attended anywhere from one to ten weeks.

185 Registered Participants

51% of participants live in single mother homes

9% of participants live with grandparents

54% of participants receive free/reduced lunch

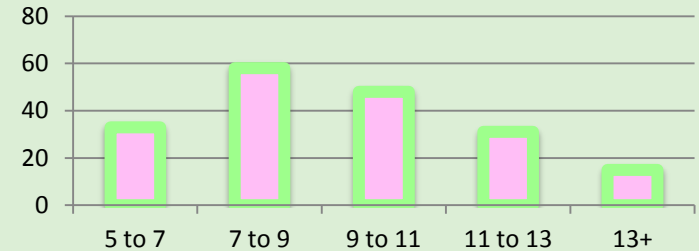
Volunteers

15 total volunteers

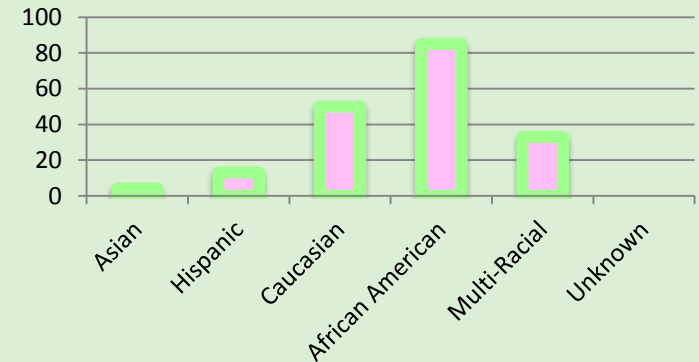
155 hours donated

Valued at \$3,349.55 (independentsector.org)

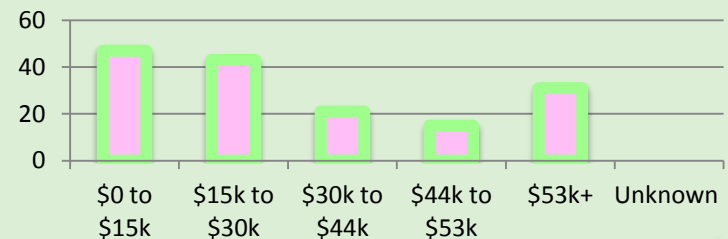
Age Groups



Ethnic Breakdown



Household Income



PROGRAM FEES



ATHLETICS

Basketball	\$50/season
Track	\$50/season
Volleyball	\$110/season
Summer Sports Camps	\$130/season

An annual Girls Place Membership is required to participate in any program at a cost of \$20 per child.

AFTER SCHOOL

Elementary	\$49/week
Elementary sibling	\$41/week
Middle/high school	\$30/week



SUMMER DAY CAMP

Registration	\$25
First member	\$75/week
Sibling	\$65/week

REVENUES AND EXPENSES



Contributions	\$221,556
Program Service Revenue	\$283,191
Rental Income	\$33,379
Merchandise Sales	\$3,816
Interest Income	\$192

Program Expenses	\$400,723
Management and General	\$66,769
Fund Raising	\$38,633

Total Revenues **\$542,134**

Total Expenses **\$506,125**



- ## Annual Fundraisers
- Swamp Chomp
 - Will Muschamp Scramble for Kids
 - Chicken Lunch
 - Hats, Hearts, & Handbags

ANNUAL AWARDS



Alumni of the Year – Meggen Sixbey

Volunteer of the Year – Kim Rodriguez

Booster of the Year—Venture Realty

Board Member of the Year—Sheila Jones

Parent of the Year—Michelle Smith

Coach of the Year—Devika Bellamy

Athletes of the Year—Skylar Hickey and
Faith Marquis

Girl of the Year—Lily Jensen

Teen of the Year—Kaitlyn Henderson



FRIENDS OF GIRLS PLACE



A Nu Twist Salon
Alachua County CAPP
Alachua County Foster Grandparent Program
Allison Ables Realty
Alma Mater
Amazon Smile
Arvin, Gia and Scott
Austin, Jack P & Betty R
Avera & Smith
AvMed
Baker, Charles
Bank of America
Barefoot Wine & Bubbly
Barry, Pamela & Walter
Belk's
BJ's Restaurant
Bowser, Jeffrey
Burleigh, Rebecca
Butler, Amanda
Carodine, Keith
Central Florida Community Action Agency
Charley's Snow Shack
City of Gainesville
Cottman, Sara E.
Covell, Charles and Elizabeth

Cox Communications
Cross Keys Properties LLC
Davis, Frank
Denny, Wanda N and Charles H
Dollar General Literacy Foundation
duBois, Michele
Edwards, Irma
Ellis, Shari
Farrah & Farrah
Five Star
Fowler, Vivian
Friendly Tavern
Gainesville Sun
Gate Petroleum
Gateway Bank
GFWC Gainesville Junior Women's Club
Goodsearch
Hampton Inn Downtown
Hardman, B.
Holland, Angela
Home & Land
Home Magazine
Hydrosphere Research
Jones, Bill and Liz
King Insurance Agency

Kiwanis Club Foundation
Krajnovich, Joyce
Latour, Mary
Leadership Gainesville
Lloyd Clarke Sports
Marken Group at Morgan Stanley
Mark's Prime Steakhouse
Martin, Cliff
Mary and Barry Wagner
Matt & Stacey Lang
McCulloch, Elizabeth
Merrill Lynch
Miles, Ella
Milhopper Montessor School
Not Your Mothers Hair care
Oquendo, Francisco
Peppers 6 Inc
Perry Roofing
Phillips, Debra
Plum Creek Foundation
Publix Super Markets
Ray's Metal Work Inc
Red Onion
Reggae Shack
Renaissance Printing

Resort Connections
Richards, Shannon
Rotary Club of Gainesville Sunrise
Satchels Pizze, Inc
Share The Advantage Carnival
Shepherd, Emily
SkyFrog Tree Service
Smith, DeeDee
Sonic Drive-In
Southern Charm
Steadman, Jeremy
Stitching Gators Chapter, EGA
Stofer, Kathryn
Subway
Texas Roadhouse
The Allstate Foundation
Torress, Gladys
Tower Hill
Travis, Patricia
UF Health & Shands
UF Health Sleep Center
UF Soccer
UF Women's Basketball
United Way of North Central Florida
University of Florida Campaign for Charities
Val- U Car of Gainesville
Varnado, Kevin
Venture Realty of North Florida, Inc.
Wagner, Mary and Barry
Walmsley, Hughes
Wayland Structural Engineering
WCJB-TV20
Wells Fargo
Westside JEA Workout Facility
Wilson, Creighton & Amy
Women's Council of Realtors of Gainesville
Yogurtology of Florida
Zaxby's





Thank you to everyone who
made our 2014 programs possible.
We will be expanding our
programs in 2015!

